



QBB - Models, anatomy

1 | Human anatomy and physiology are very complex and specialized. The different organs of the human body are organized in systems perfectly coordinated to carry out all the physiological functions that life requires

2 | To understand this organization and human anatomy, we offer these complete models of head and torso, very useful in universities, hospitals and laboratories.

► Head and neck

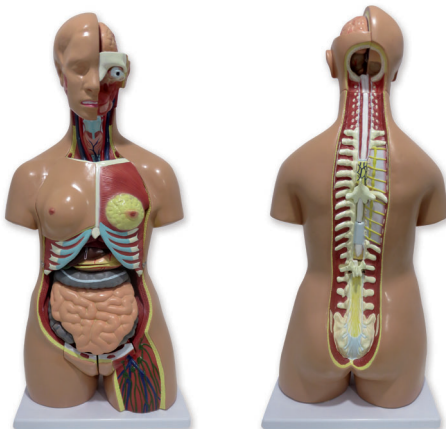


1 | Life size model with baseboard; its right side shows the normal outline of the head whereas the left one is vertically and horizontally dissected so that structures of both, skull and brain, can be observed.

2 | An hemisphere can be disassembled into four parts; head, left side of cranium, eyeball and cerebellum.

Code	Parts	Magnification
QBB026	7	1x

► Dual-sex human torso, open back



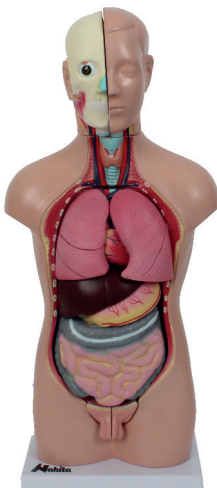
1 | Life size model that can be disassembled into 27 parts and includes a base board.

2 | It shows all human systems (digestive, respiratory, urinary, reproductive and nervous).

3 | As well as the organs composing the head, neck, thoracic cavity (trachea, lungs, heart, oesophagus), male and female pelvic cavity, abdominal cavity (liver, stomach, intestine, pancreas); it also presents the back opened to show the vertebral column.

Code	Parts	Magnification
QBB041	27	1x

► Human mini torso with head



1 | Human male mini-torso

2 | With the following detachable pieces: head, brain, lung lobules, stomach, heart, liver, intestinal pack and male genital system.

Code	Parts	Size
QBB015	12	42cm