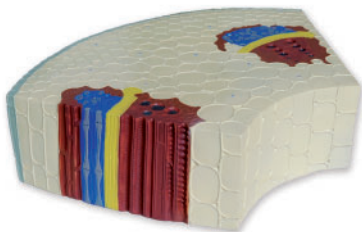




QBG - Botany

Aimed at the study of the most interesting plant structures in educational purposes.

► Dicotyledon stem



- 1 | Cross and longitudinal section of the root.
- 2 | It shows the vascular bundles (xylem, phloem, procambium), the cortex and the parenchyma (medullary and interfascicular) as well as outer epidermis.
- 3 | Made of PVC.

Code	Parts	Magnifications
QBG001	1	125x

► Root tip longitudinal section



- 1 | Longitudinal section of root that shows its internal and external morphology.
- 2 | Represents division zones (calyptra and apical meristem) elongation and differentiation (apical hair).
- 3 | Made of PVC.

Code	Parts	Magnifications
QBG002	1	100x

► Peach blossom



- 1 | The model represents the essentials parts of a flower: receptacle, calyx, corolla, stamens, filament and pistils.
- 2 | Supplied with a baseboard.

Code	Parts	Magnifications
QBG003	1	200x

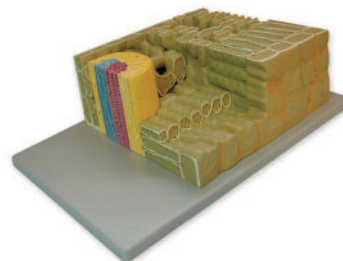


QBG - Botany

► Leaf section

- 1| With six numbered parts, they are represented the upper epidermis, palisade mesophyll, vascular tissue, spongy mesophyll, lower epidermis and stoma.
- 2| Supplied with a baseboard.
- 3| Cross and longitudinal section of the leaf.

Code	Parts	Magnifications
QBG005	1	700x



► Vascular bundle

- 1| The model shows the structure of conducting bundles with great detail in which nine numbered parts can be distinguished: parenchyma, xylem, phloem, cambium, fiber, etc.
- 2| Supplied with a baseboard.
- 3| Cross and longitudinal section of the vascular bundles.

Code	Parts	Magnifications
QBG006	1	550x



► Fertilization of angiosperm

- 1| This model shows the fertile parts of a flowering plant (carpel and Stamen) for the study of seed plants.
- 2| Supplied with a baseboard.

Code	Parts	Magnifications
QBG007	1	300x

