



QBB - Models, anatomy

- 1 | Through the sense organs we receive and process information of the outside world to interact with it in a safety and independent way.
- 2 | The understanding of the mechanism of action of such organs is thus

very important and with this purpose we offer this series of anatomical models of the different sense organs all of them supplied together with a didactic explanatory text.

► Sense organs - Eye models



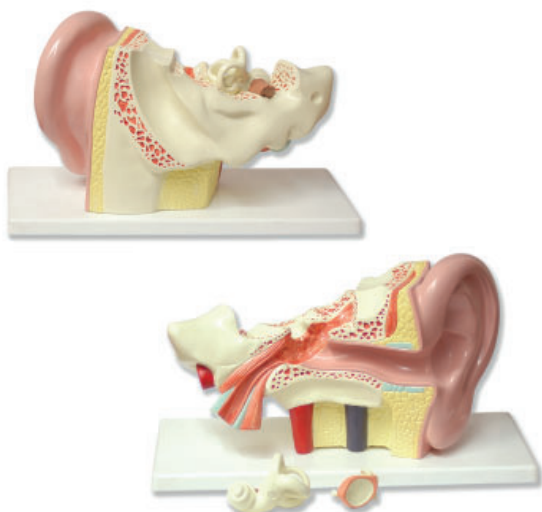
- 1 | These two models of the eyeball can be dismantled in several parts to show the full structure of the eye: cornea and sclera, iris and choroid, retina, crystalline lens, anterior, posterior and vitreous chamber, optical nerve and eye muscles.
- 2 | Each model is enlarged approx. 6 times and both are supplied with base.

The models can be dismantled in:

- Upper half of the eyeball (only model QBB001)
- Cornea
- Iris
- Crystalline lens
- Vitreous humour

Code	Parts	Magnification	Dimensions with base (LxWxH)
QBB001	6	6x	15x15x25 cm
QBB016	5	6x	16x16x20 cm

► Sense organs - Ear models



- 1 | These useful models are a representation of the outer, middle and inner ear that allows the study and detailed visualization of the organ of hearing and balance: ear flap and canal, eardrum and ossicles, Eustachian tube, cochlea and semicircular canals, and the auditory nerve. Both models are supplied with base.
- 2 | According to what is described for each model, they can present several detachable pieces (eardrum, ossicles, cochlea, semicircular canals or the auditory nerve).

Code	Parts	Magnification	Dimensions with base (LxWxH)
QBB002	4	3x	15x36x20 cm
QBB003	3	1.5x	12x17x12 cm



QBB - Models, anatomy

► Sense organs - Nasal cavity model

- 1| The model shows the left upper half of the face allowing the study and detailed visualization of the nasal structure.
- 2| Different structures are represented: frontal, sphenoid and maxillary sinuses, nasal cartilage and septum, olfactory mucosa and bulb, superior, medium and inferior concha as well as blood supply and nerve endings of the nasal and olfactory mucosa and the palate.
- 3| The model is enlarged 3 times and is supplied with base.

The model presents 2 detachable pieces:

- Nasal septum
- Medium concha

Code	Parts	Magnification	Dimensions with base (LxWxH)
QBB004	3	3x	15x28x33 cm



► Sense organs - Skin model

- 1| This skin block model represents a three-dimensional section of the human thin skin. The model shows the three layers in which it is structured (epidermis, dermis and hypodermis).
- 2| Different structures are also represented such as hair follicles, sebaceous and sweat glands, sensitive receptors, nerves and blood and lymphatic vessels.
- 3| The model is enlarged 60 times approx. and is supplied with base.

Code	Parts	Magnification	Dimensions
QBB029	1	60x	170x170x180 mm

